



Spacio Integral
arquitectos





The last four years Rodriguez was the project coordinator for the enlargement of The Four Seasons Hotel Punta Mita and also Manager of General Coordination and Supervision for the construction of 14 hill side villas of 500 and 600 square meters and 3 beach front villas of 900 square meters. All of this has given to Rodriguez substantial experience in the coordination, supervision and construction of high quality and complex projects.

CASA CAMILA

Spacio Integral, founded by Architect Marco Rodriguez, who has collaborated in the last 10 years with group DINE, developer of Punta Mita Nayarit, Mexico, and also with Truqui and Associates as a manager of high level projects such as the golf course designed by Jack Nicklaus, The Four Seasons Hotel Punta Mita and its extensions, the construction of a SPA, and other quality projects.



Sketch

Render

Picture



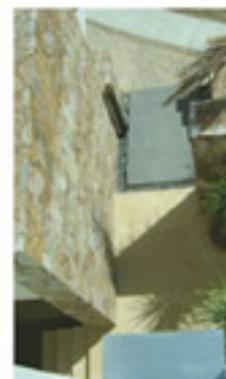
Marco Rodriguez has also designed several projects like the Dolphin Center and the Main Office of Vallarta Adventure, the facilities of Mexico-Americano, the largest school in Puerto Vallarta, including a gymnasium and a olympic swimming pool, and other works in residences and different projects.



Delfinario
vallarta adventure

Terrain: 4,426.00 m²
 - Ground floor
 Pool Area: 1,500 m²
 Constructed Area: 849.80 m²
 Pergola: 124.85 m²
 Corridors Area: 426.83 m²
 Garden Area: 810.65 m²

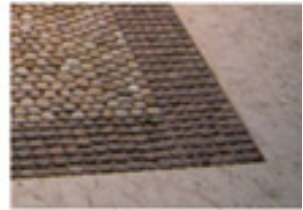
- High floor
 Constructed Area: 180.74 m²
 Corridor zArea: 137.77 m²
 Stairs Area: 20.51 m²
 Garden Area: 48.83 m²



The most recent project finished by Architect Marco Rodriguez, is Casa Camila, designed for a young couple passionate for fine architecture. This project was completely designed and constructed by Rodriguez from start to finish. This work exemplifies all the experience Rodriguez has acquired working on high quality constructions. It also demonstrates a clear understanding of the Architectural Project Design, combining open and sheltered spaces with a sense of enlightenment, and at the same time allowing the impact of the architecture to express itself, using water as an element inside and all around the house, leaving open areas to view the garden from the inside, and utilizing different textures of natural materials: stone, ashlars and marble, to allow the home to provide an integral and pleasing experience.



Casa-Passios



Casa Flamingos



coffee - caffe



www.spaciointegral.com



Spacio Integral
— — *arquitectos* — —

Arq. Marco Rodríguez
Privada del Calmán # 127 Col. Haciendas de Pitalá
Cel: 044 (322) 134 6173 Nextel: (322) 145 3284 Id 62*244589*2
aramrodriguez@spaciointegral.com
arq_mrodriguez@yahoo.com.mx